



STATE OF NORTH CAROLINA  
DEPARTMENT OF TRANSPORTATION  
DIVISION OF HIGHWAYS

BEVERLY EAVES PERDUE  
GOVERNOR

EUGENE A. CONTI, JR.  
SECRETARY

July 12, 2012

TO: Prospective Bidders  
FROM: Sean Epperson, PE, Deputy Division Traffic Engineer  
SUBJECT: Addendum 1 – Steel Support Design Sheet

The attached steel support design sheet should be used to replace the steel support design sheet provided with the plans for this project. Should you have any questions about this you may contact me at the number listed below.

SME

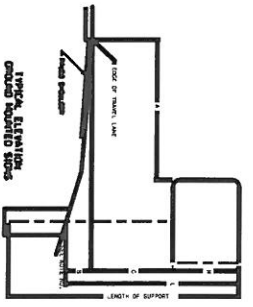
CC: File



SIGN NO.	SIGN TYPE	SIZE (ft.)	ROADWAY STATION	NO. OF SUP.	BEAM SECTION	SUPPORT TYPE	ATTACH METHOD	MOUNTING METHOD	LENGTH (ft.)			LEFT SUPPORT (ft.)			CENTER SUPPORT (ft.)			RIGHT SUPPORT (ft.)			FOOTING DIAMETER (ft.)	FOOTING DEPTH (ft.)	R/A	SUPPORT WEIGHTS (lbs.)	REINF. FTGS. (c-y.)	FIELD VERIFIED FTGS. (c-y.)		
									H	C	MENT	S	L	TOTAL	S	L	TOTAL	S	L	TOTAL								
101	A	120 X 78		2	W6X16	S	N/A	N/A	18.00	6.50	7.00	4.5	14.50	18.30	22.80	0.00	0.00	0.00	6.20	19.70	24.20	1.5	5		752.00	0.65	0.00	
102	A	120 X 78		2	W6X16	S	N/A	N/A	10.00	6.50	7.00	5	6.50	20.30	25.30	0.00	0.00	0.00	8.20	21.70	26.70	1.5	5		892.00	0.72	0.00	
TOTAL																							1584.00	1.37	0.00	1584	2	0

USE:	TOTAL	TOTAL	TOTAL
	1584.00	1.37	0.00
	1584	2	0

- NOTES
1. DIMENSION "S" REPRESENTS AN INCREASE (+) OR A DECREASE (-) IN POLE LENGTH, RELATIVE TO THE ELEVATION OF THE EDGE OF PAVEMENT.
  2. FIELD VERIFICATIONS SHALL BE REQUIRED FOR ALL SUPPORTS, SEE (1) ARTICLE 903-3, (2) = N.C.D.O.T. STANDARD SPECIFICATIONS FOR ROADS AND STRUCTURES
  3. PLAN LOCATIONS FOR EXISTING UTILITIES ARE BASED ON THE BEST AVAILABLE INFORMATION FROM THE CONTRACTOR AND BEING WELL ACCURATE. THEREFORE, IT IS INCUMBENT UPON THE CONTRACTOR TO DETERMINE THE EXACT LOCATION OF UTILITIES BEFORE BEGINNING WORK IN A LOCATION.



TYPE "A" AND TYPE "B" GROUND MOUNTED SIGNS